
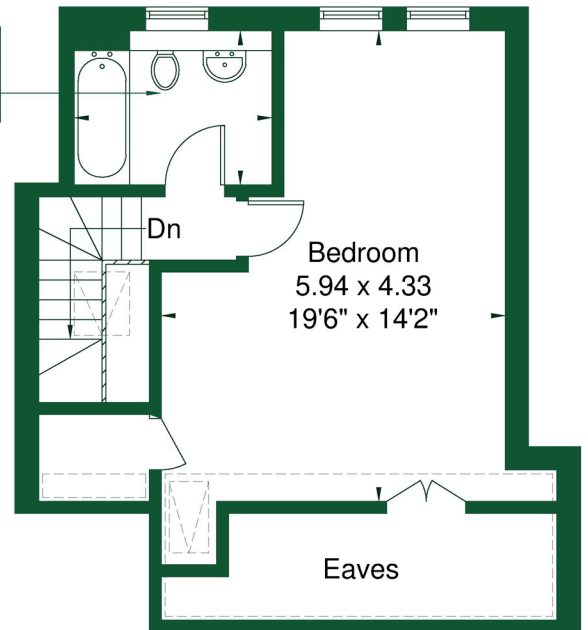
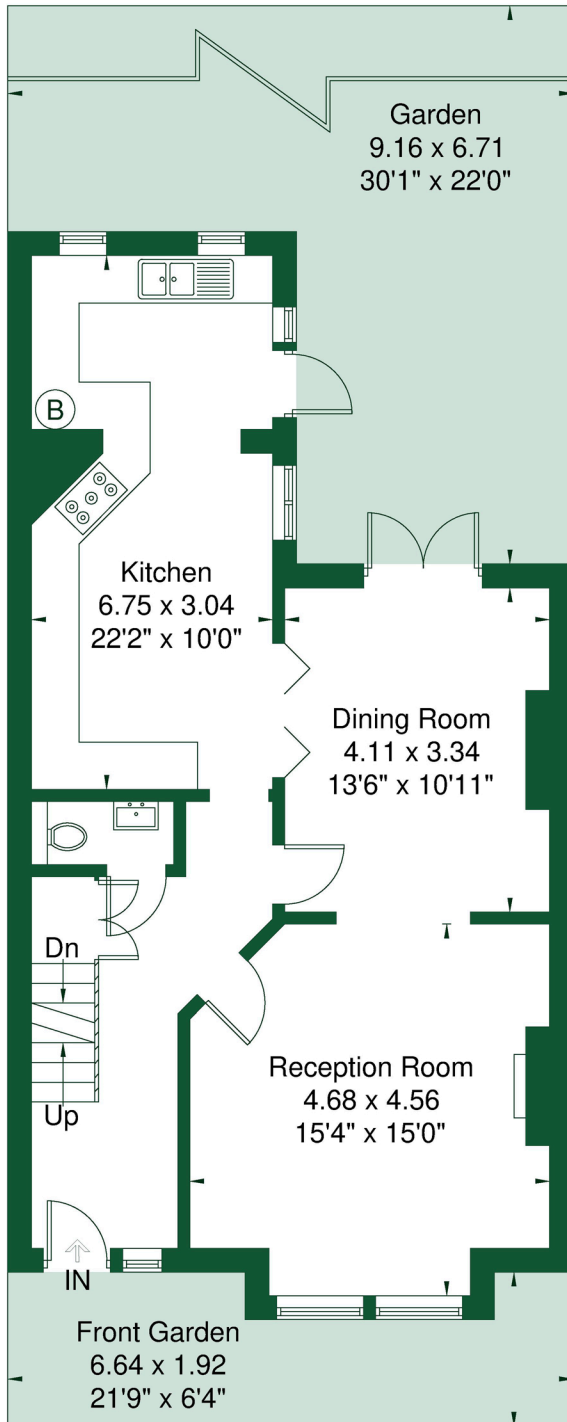


Gainsborough Road

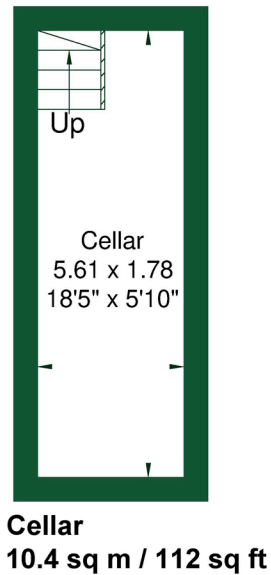
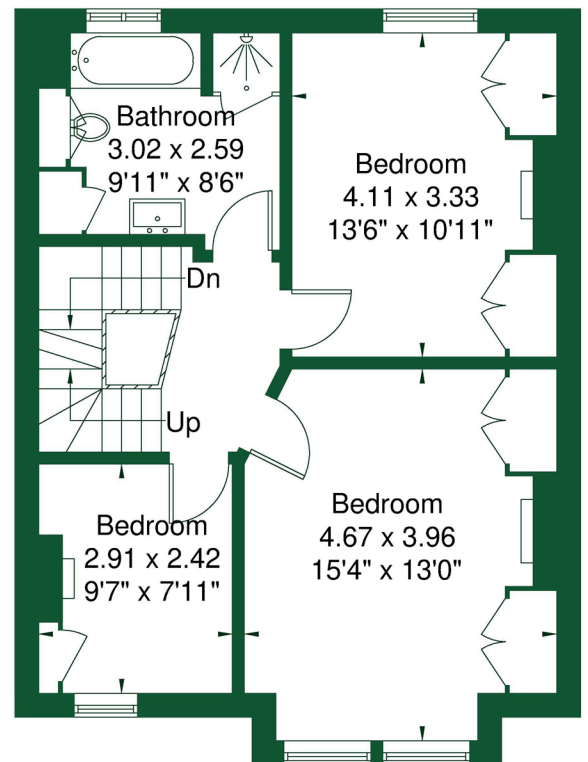
Approximate Gross Internal Area = 169.8 sq m / 1828 sq ft
 Eaves Storage / Reduced Headroom = 9.8 sq m / 105 sq ft
 Total = 179.6 sq m / 1933 sq ft



 = Reduced headroom below 1.5m / 5'0"
Bathroom
 2.43 x 1.97
 8'0" x 6'6"



Reduced Headroom
 9.8 sq m / 105 sq ft



Although every attempt has been made to ensure accuracy, all measurements are approximate.
 The floorplan is for illustrative purposes only and not to scale.

© www.perspective.co.uk